



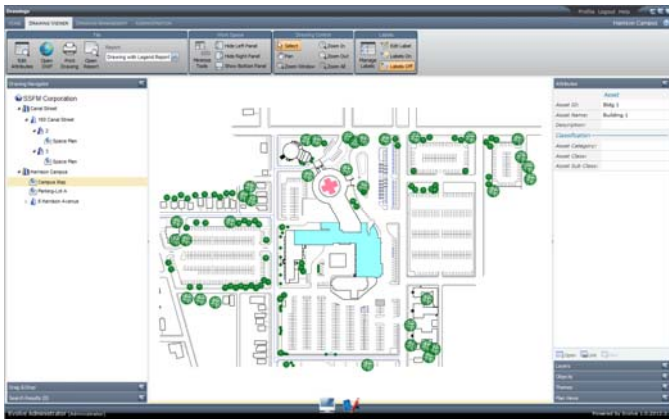
## Low Cost, Easy to Use CAFM Software for Facilities Management

### Simple Solutions FM

IWMS CAFM CMMS Software & Services

### Facility Management For Everyone

**E**volveFM provides a high-performance way to share your facility drawings and data with everyone who needs them in real time. It delivers facility information via a simple and intuitive browser interface through your organization's intranet, corporate network, or the internet via a web server.



### Around the Office or Around the World

EvolveFM includes everything you need to deploy a robust web application for viewing your intelligent facilities drawings, data, and reports. User logins control who has access to what data and functions... No complicated software to learn, no programming skills needed.

### Easy to Deploy

EvolveFM uses Microsoft IIS server software technology to connect your users to a SQL (or SQL Express) database via Internet Explorer 7 or later. EvolveFM also uses Flash technology to provide access to drawings for zooming, panning, and theming.

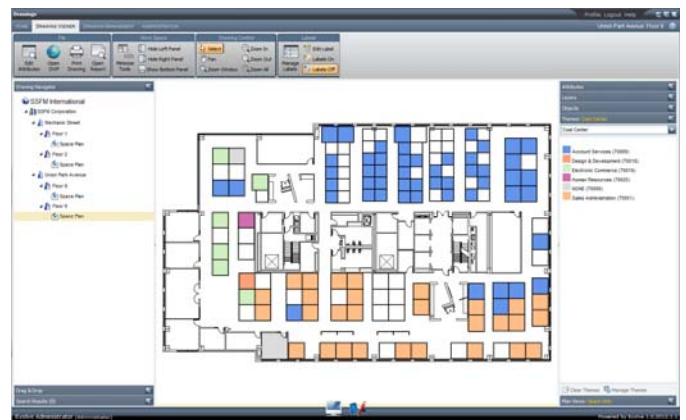
The seamless integration of drawings and data presented in a live browser environment is a real breakthrough for sharing your facility information in real time with all those who need it.

### Security

With so much of your vital facility information distributed over the web, you're likely to be concerned about security. With EvolveFM you control which drawings, data, reports, and features are accessible to which users via a user logon.

### Visualize Your Data

Easily theme your drawings based on allocation, space type, occupancy, virtually any criteria that you need. Spaces will automatically be multi-hatched if they are assigned to multiple cost centers.



### Take Advantage of Your BIM Data

EvolveFM gives you the tools to extract and manage more of the information contained in your drawings. You decide just how much to expose.

With the Layer and Object controls in the viewer you choose what geometry to make visible and which objects to make "clickable" giving you the ability to navigate through your data graphically to get to the information you need. Use this tool to manage all the way from the exterior property level down to pieces of equipment, signage, data jacks, the possibilities are endless.

